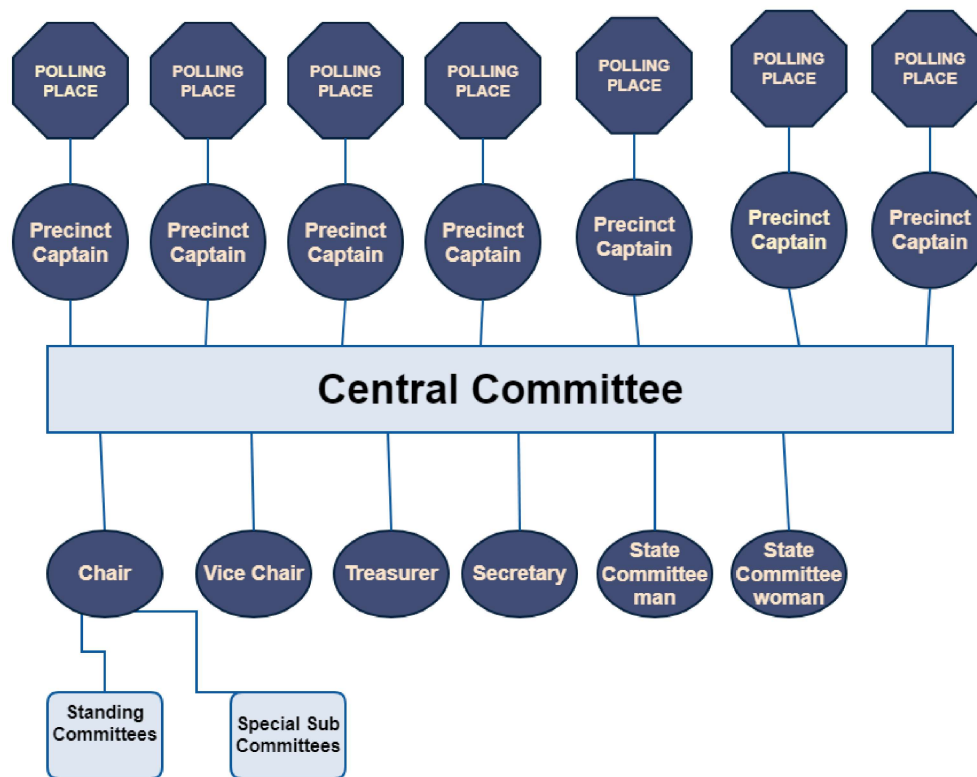


County Central Committee Guide

Dennis Sutton – January 2022

A political party's county central committee is comprised of qualified electors affiliated with that Party who have lived in their precinct for the past 6 months, who were elected by their neighbors to become Precinct Captains (PCs). The boundaries for each polling place in the county establishes each precinct. And each precinct can have one Precinct Captain. Together the PCs form the Central Committee, or Board of Directors, which elects officers, establishes policy, sets agenda, and makes financial decisions.

COUNTY CENTRAL COMMITTEE ORGANIZATION CHART



A Central Committee probably needs at least three members to start, more are better. Officers and PCs serve until they resign, or their term expires with the next Primary Election (held every two years preceding a General Election). At minimum they need to elect a chair, treasurer, and a secretary. Also needed are a State Committeeman and a State Committeewoman, who will represent your county on the State Central Committee as voting members along with the county chair. A person may hold more than one position, or title, but they are limited to just one vote in the committee. Quorums, needed in order to have valid meetings, are based upon PC attendance.

The Chair is the moderator of the discussions and leader of the meeting. All comments, motions, and questions are directed to the Chair, not each other. This keeps discussions civil and on topic, plus it avoids issues from becoming personal arguments.

The Chair does not vote, except in the case of a tie. But the Chair does select which member speaks next and rules on motions presented or proposed (Roberts Rules).

The Treasurer, is the Chief Financial Officer, responsible for all matters financial, filing Sunshine Finance Reports, and any physical assets (banners, tables, sound systems, etc) that the group acquires. Since many of these duties require significant time, the Treasurer is urged to delegate as many of these duties as needed to subcommittees.

The Secretary is the Chief Clerical Officer, they are in charge of keeping of the minutes of every official meeting, storing them, maintaining your membership & attendance records, and properly communicating with your county clerk's office regarding your official memberships. They should also delegate many of their duties to subcommittees for publicity, social-media, newsletters, party emails, etc.

The State Committeeman and State Committeewoman are elected solely to be, along with the Chair, voting members of the State Central Committee. They have no defined portfolios other than those assigned by the State Party or your committee.

Meetings are to be called with an agenda detailing the business to be accomplished, along with the time and place. Your agenda starts with introductions, then approval/amending of the agenda, followed by approval/amending of the minutes from the last meeting. Then a list of the items of business to be considered and adjournment.

Precinct Captains are leadership positions. Not only are our PCs the foundation for their central committees they are the foundation from which we rebuild the whole party every two years. They directly create central committees for two different organizations: their county committee and their legislative district committee. Because of different geographic boundaries the membership and scope of these committees will usually differ one from the other. The county committee's primary domain is the nine elected offices in their county seat, plus the non-partisan races (city, school district, etc.) below the partisan level within their county. The legislative district committee's domain is limited to just those partisan races for seats in the Idaho legislature (1 state senator and 2 state representatives) representing their legislative district, which will probably include more than one county, resulting in a different membership make-up.

Precinct Captains are the elected (or appointed) officials closest to their voters. They are the only party officials that effectively cannot be fired. All other officers and positions within their parties are the product of either their direct votes, or the votes of those who were elected by precinct captains. The duties and expectations of positions and offices within that committee, beyond simple attendance, are defined by, and are accountable only to, those who elect them.

You have a chance to make a real difference in the party as a precinct captain when you're actively involved. Let's work together to build a better Idaho!